



## **Installation Notes**

Complete Set Active Sound incl. Soundbooster

VW Passat B7

v1.2 (26.05.2017)

## Contents

1	Liability Exclusion	3
2	Copy Right	4
3	General Notes	4
4	Safety instructions	5
5	Requirements for the determinable operation	5
6	Note	5
7	How to connect a cable to another	6
8	Note Cable Inscription/Color	7
9	Installation Instruction	8
10	Connection Ignition Plus	9
11	Connection Cable Set	10
12	Placing the Sensing Device / Laying Cable Set Sound Booster	11
13	Laying Cable Set Sound Booster	12
14	Installation Sound Booster	14
15	Important Information Sound Booster	15

# 1 Liability Exclusion

Dear Customer

Our cable sets are developed according to the connection- and circuit diagrams of the corresponding car manufacturer. Before the original production the cable sets will be tested on an original car. Therefore, the integration into the car electronics will be executed according to the instructions of the manufacturer. Regarding the necessary pre-understanding and the accuracy of the presentation of texts and pictures our mounting guidelines correspond to the usual ones in car technology and car electronics. Practically, they have been proved one's worth a hundred times.

However, should there be any difficulties during the installation of our products we will be at your disposal any time for support by phone or by mail. Moreover, we offer you to execute the installation at our works in Bad Segeberg.

Costs which may arise because a third person will execute the installation of our products will not be supported by us in any case. Only if there is a mistake caused by our product we will pay the proved costs of the installation as well as the costs of the removal of the defective product. The refund of expenses will be limited to gross EUR 110,- ; we reserve the right to check the described mistake in our works in Bad Segeberg. In case of a proved reclamation the costs for dispatch for the check in our factory will be transferred to you.

According to our experience each specific factory which has the necessary diagnostic device, diagnostic software and the circuit diagrams of the manufacturer can find possible mistakes at our products within a short time. So the installation and removal including diagnostic inspection can be realised in at most 60 minutes.

We also made the experience that many specific factories cannot work with the circuit diagrams of the manufacturer, and that they cannot read usual wiring diagrams. Therefore, very easy installation works will take many hours. You will understand that we neither take the risk to find a reliable specific factory nor the financing of the training of the staff of your favoured factory.

Costs which will arise because you buy missing parts or spare parts at other suppliers will be refunded by us up to the amount of the costs which had been arisen by additional supply (saved expenses). In this case, there would be no right for refund according to the legal guarantee right as long as we have no deadline for supplementary performance or a deadline for supplementary performance has not expired.

So if you have any problems with the installation or operation of one of our products please call us, send us an email, send us the product or take your car to our factory in Bad Segeberg. We are sure to find an appropriate solution for each concern.

With best regards

Your Kufatec GmbH & Co. KG Team

## 2 Copy Right

Our installation- and removal instructions, installation plans, software and other documentation with texts or pictures are protected by copy right.

A publication or distribution of these documents is only permitted with a written approval of Kufatec GmbH & Co. KG.

## 3 General Notes

Regarding the development there has especially been paid attention to your personal safety together with the most possible operating comfort, modern design and actual product technologies.

Despite most possible accuracy in case of incorrect installation or use or in case of incorrect operating, it is possible that injuries or damages of property may arise.

Therefore, please read the operating instructions you have received carefully and completely, and keep it with you.

All articles of our production will be checked at 100% — for your safety.

We reserve the right to make technical changes which serve the progress at any time.

Before the installation or startup it may be necessary, depending on the article and purpose of use, to check the legal instructions of each country.

In case of warranty claim the device has to be sent to the seller originally packed together with the sales receipt and a detailed description of the mistake. Please consider the manufacturer's instructions for return (RMA). The legal warranty instructions are valid.

The warranty claim and also the permission for startup will expire in case of:

- unauthorised changes on the device or the accessories which have not been executed or approved by the manufacturer or its partners
- opening of the box
- repair of the device on your own
- incorrect use / no normal use / startup
- influence of force on the device (falling down, wilful damage, accident, etc.)

During the installation please consider all safety and legal instructions. The device may only be installed by trained qualified personnel or persons who are similar qualified.

**In case of installation- or function problems please reduce the search of the mistake to approx. 0,5 hours for mechanical works or 1,0 hours for electronic works.**

To avoid unnecessary additional work and expenses, please send immediately an inquiry to our technical support with the Kufatec contact form (<http://www.kufatec.de/shop/de/infocenter/>)

Please absolutely mention the following:

- car chassis number
- part number of the add-on kit
- exact description of the problem
- work steps already made

## 4 Safety instructions

The installation may only be executed by trained qualified personnel. Please execute the installations only in a condition of dead voltage. Here please separate for example the battery from the main power supply and consider the instructions of the car manufacturer.

- In order to not endanger your own driving safety please never use security relevant screws, bolts or other fixation pieces at steering, brake system or other components.
- Connect the device only at 12V wiring system voltage with ground connection to the autobody. This assembly is not allowed for the use in trucks or other cars with 24V wiring system voltage.
- Please avoid the installation of the device at positions where the driving safety or the functional efficiency of other subassembly integrated in the car are restricted.
- This module may only be used together with the following mentioned car types and models; the installation may be executed exclusively by use of the circuit points mentioned in the assembly instructions.
- Kufatec GmbH & Co. KG does not assume liability for damages which are caused by incorrect installation, the use of inapplicable circuit points or the installation into car types and -modules which are not foreseen.
- We would like to draw your attention to the fact that the module processes the data of the MOST-protocol of the car mentioned below. Therefore, during the installation of the module it will be used a model-specific complete system which we as the manufacturer of the mentioned construction line only know partly.
- Especially in case of changes within the same model line and the same year we therefore cannot guarantee the applicability of our construction line in each case. Kufatec GmbH & Co. KG does not assume liability for the applicability of our construction line with changes made by the manufacturer.
- Kufatec GmbH & Co. KG does not assume liability that the installation of the here described component has been permitted according to the guarantee instructions of particular car manufacturers. Therefore, please consider the guidelines for installation and guarantee conditions of your car manufacturer before installation.
- The manufacturer reserves the right to change components without giving reasons.
- Subject to errors and changes

## 5 Requirements for the determinable operation

Please use the device only in its the corresponding area.

In case of unprofessional and untypical use, installation or modification the permission for operation and the warranty claim will expire.

## 6 Note

**Make sure that there's enough space at the described position. If there is no space please cancel the installation and contact our technical support.**

**The use of a sound booster is not permitted without registration in the vehicle papers, in the area of the german StVZO. The noise emission of the vehicle is increased by this retrofit. The regulations of the StVZO must be observed. It is therefore recommended to ask for a specific registration option at the responsible TÜV/DEKRA office before retrofitting. Outside Germany, please observe the laws on vehicle licensing applicable in your country.**

## 7 How to connect a cable to another

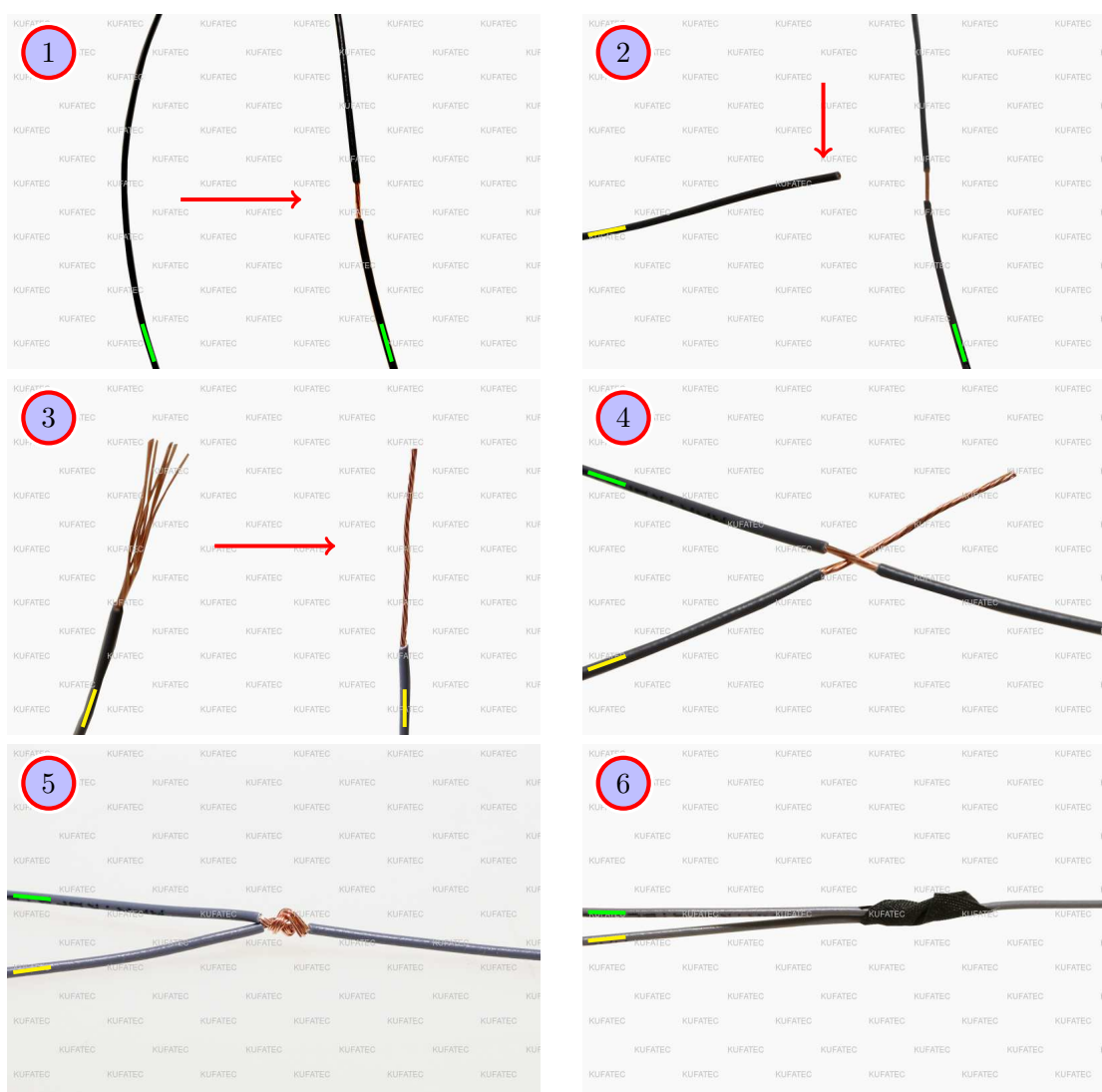


Figure 1: How to connect a cable to another

Table 1: How to connect a cable to another

No.	Work step	Note
1	Take the cable of the vehicle, to which you want to connect, (green marked here) and strip the insulation at one point with a suitable tool (cable stripper/cutter knife).	
2	Now take the cable of the cable set, which you want to connect, (yellow marked here) and strip the insulation at the end.	
3	Twirl the wires of the stripped cable together.	
4	Place the end of the cable you want to connect under the stripped point of the cable of the vehicle...	
5	... and wrap the cable you want to connect around the cable of the vehicle.	
6	Lastly, stick insulating tape around the connection point.	

## 8 Note Cable Inscription/Color



Figure 2: Cable Inscription

**If our cable set consists exclusively of grey wires, connect the wires according to the cable inscription.**

## 9 Installation Instruction

The following description shows the Cable Routing as well as the position of the single components.

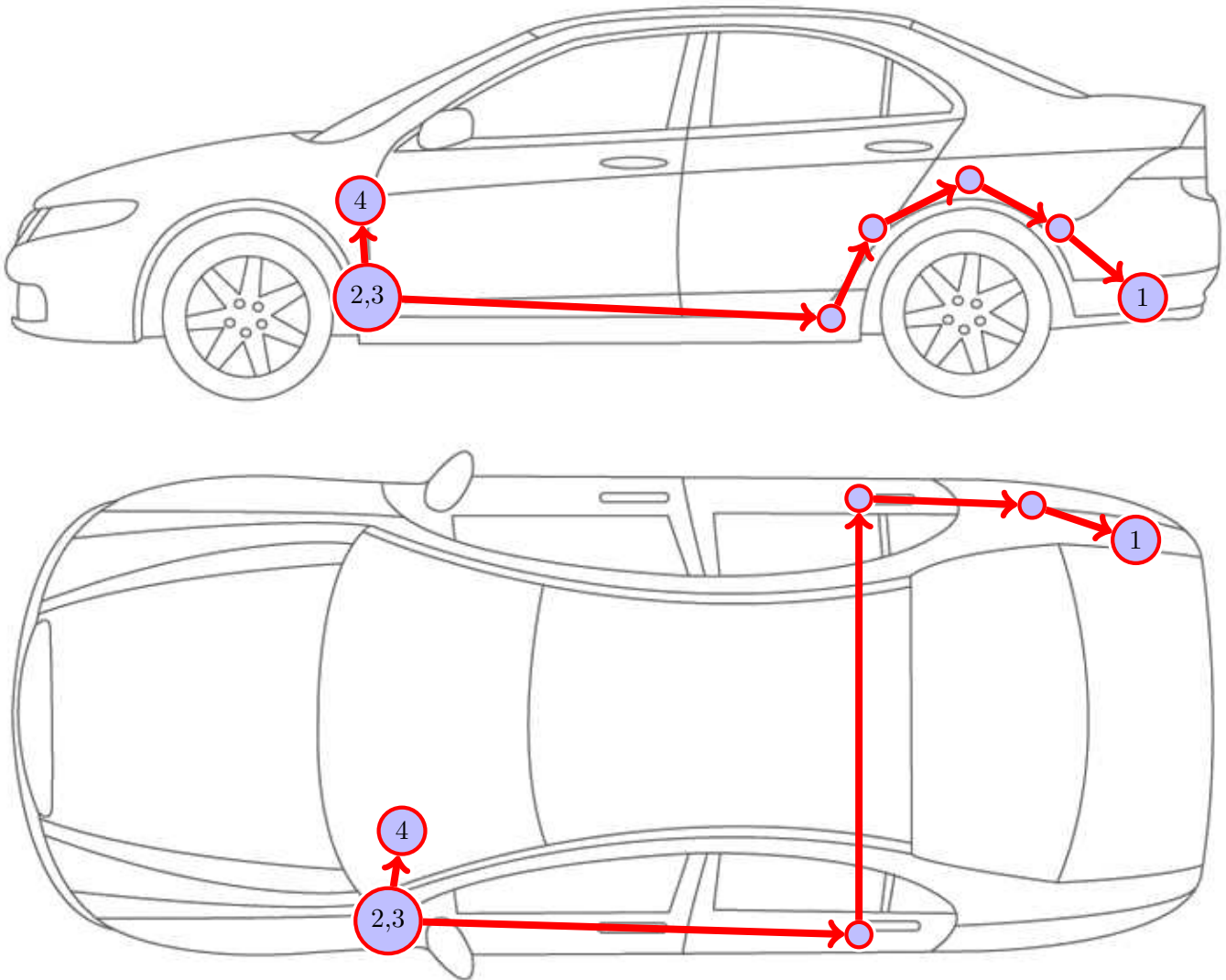


Figure 3: Car Overview

- 1 External Sound Booster including Holder
- 2 Control Unit for Motor Sound Booster
- 3 Sound Booster Pro (Module)
- 4 Sensing Device



## 10 Connection Ignition Plus

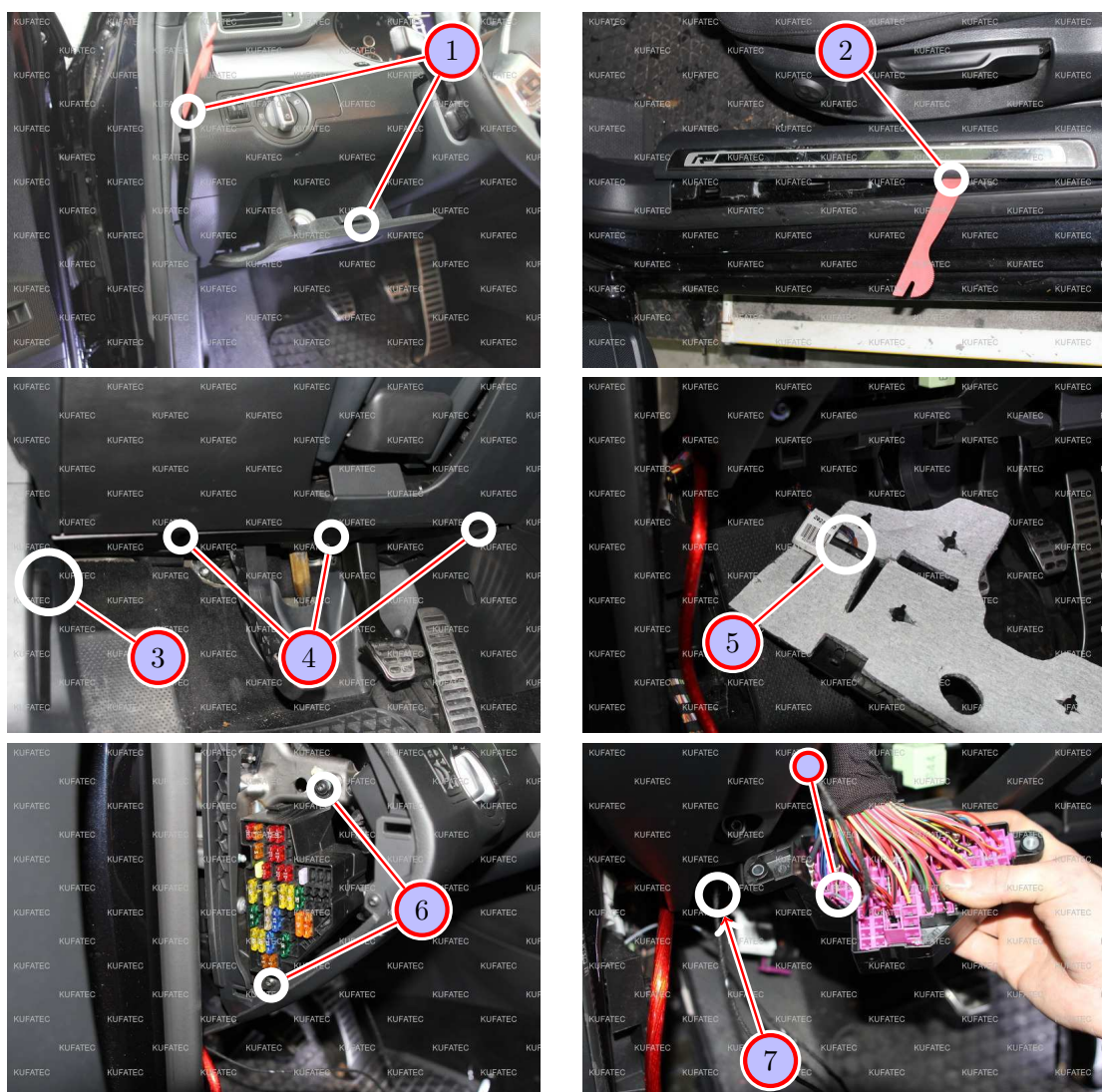


Figure 4: Pictures Connection Ignition Plus

Table 2: Instructions for the Connection of Ignition Plus

Nr.	Procedure	Note
1	Remove with an installation lever the lateral covering of the car dashboard and after that the deposition shelf compartment below the light switch.	
2	Remove with an installation lever the entering guide rail.	
3	Remove the unlocking device of the motor hood by pulling out the fuse. Afterwards the complete lever can be removed.	
4	Remove the indicated screws of the covering below the steering wheel and pull it carefully.	T20
5	Now release the plug for the leg area lighting and remove the covering completely.	
6	Remove the two indicated screws of the fuse holder and push this through the opening in front at the car dashboard (remote deposition shelf compartment).	
7	Pull the ignition cable (red/white) behind the covering of the fuse holder and pin the ignition plus cable from behind into the fuse place. For this please use the fuse place 21. Afterwards the free fuse place has to be protected with a 7,5 Ampere fuse.	

## 11 Connection Cable Set

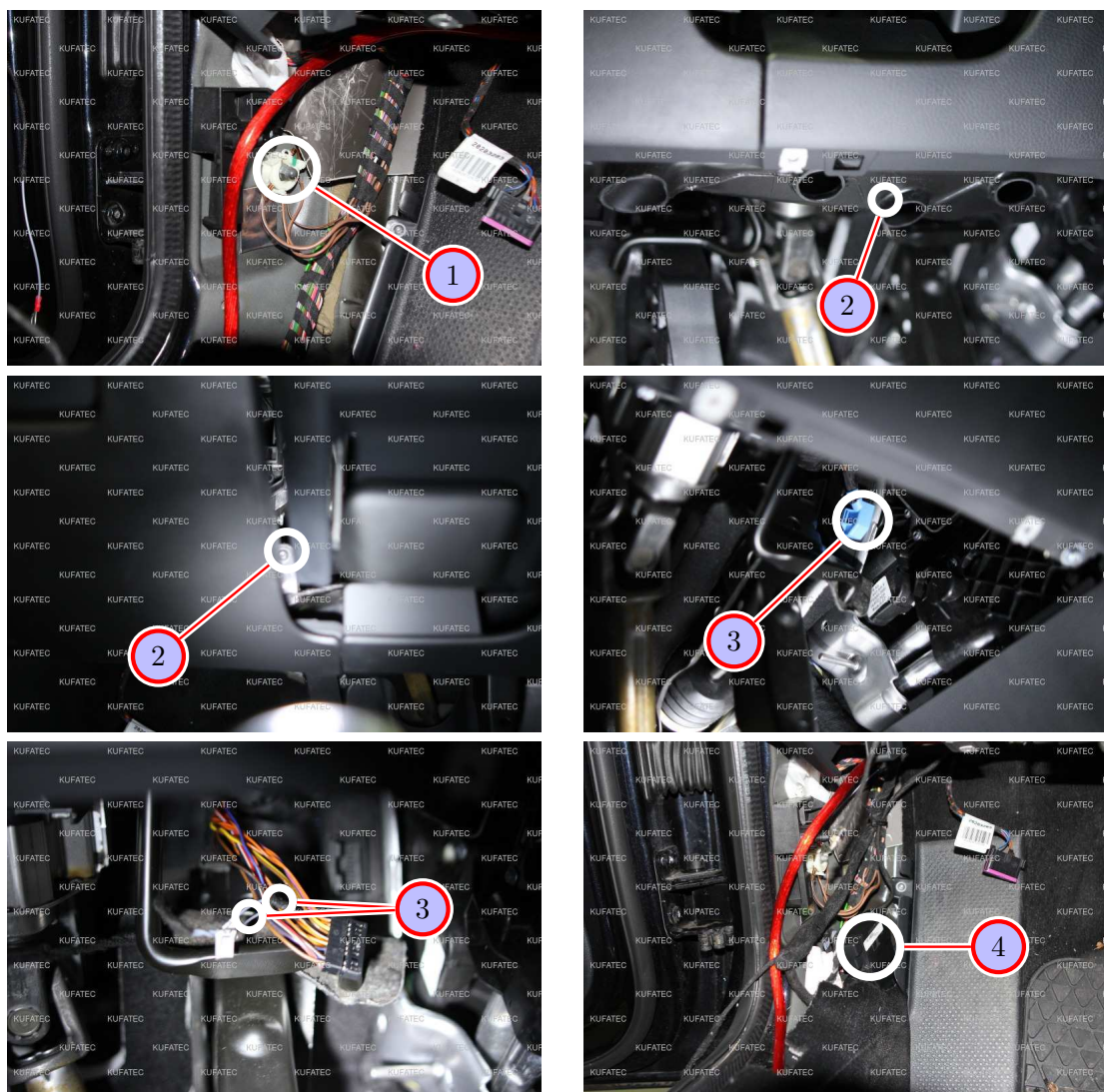


Figure 5: Pictures Connection Cable Set

Table 3: Instructions for the Connection of the Cable Set

Nr.	Procedure	Note
1	Connect the ground cable (brown) to the ground spot located below the unlocking device of the motor hood.	
2	Remove the air shaft by releasing the indicated screw. This screw can be reached with the screw driver between the covering of the car dashboard and the covering of the steering column.	T20
3	Remove the blue plug from CAN Gateway which is located above the gas pedal. Now connect CAN High and Low as follows. CAN High (black/white) at PIN 16 (cable color at plug orange/black) CAN Low (black/yellow) at PIN 6 (cable color at plug orange/brown)	
	Isolate the positions where you have connected the cables with a fitting insulating tape.	
4	Place and fix the control unit and the Sound Modul at the indicated postion directly beside the leg area.	



## 12 Placing the Sensing Device / Laying Cable Set Sound Booster

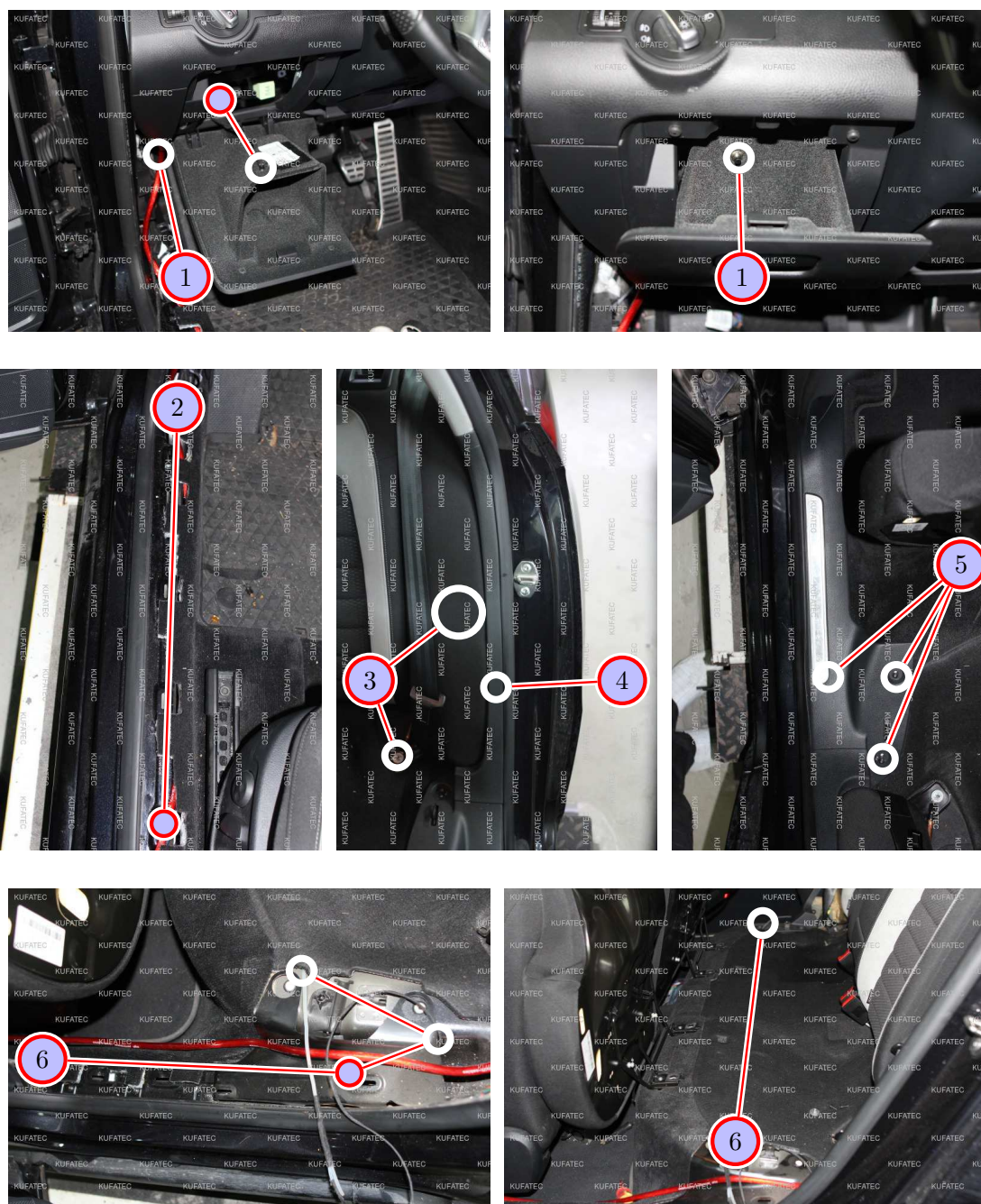


Figure 6: Pictures Placing the Sensing Device / Laying Cable Set Sound Booster

Table 4: Instructions for Placing the Sensing Device / Laying the Cable Set Sound Booster

Nr.	Procedure	Note
1	Place the sensing device cable behind the covering of the deposition shelf compartment. Drill a hole for the Sensing Device and after that install this (Proposal for placing).	7mm
2	Pull the cable for the Sound Booster up to the B-column.	
3	Release the screw and afterwards remove the side bolster.	10 Nut
4	Now remove the C-column covering.	
5	Release the indicated screws and remove after that the entering guide rail.	T20
6	Continue to pull the cable with a pull-through assistance from the B-column under the holder and after that under the carpet of the back seats towards the co-driver's side.	

## 13 Laying Cable Set Sound Booster

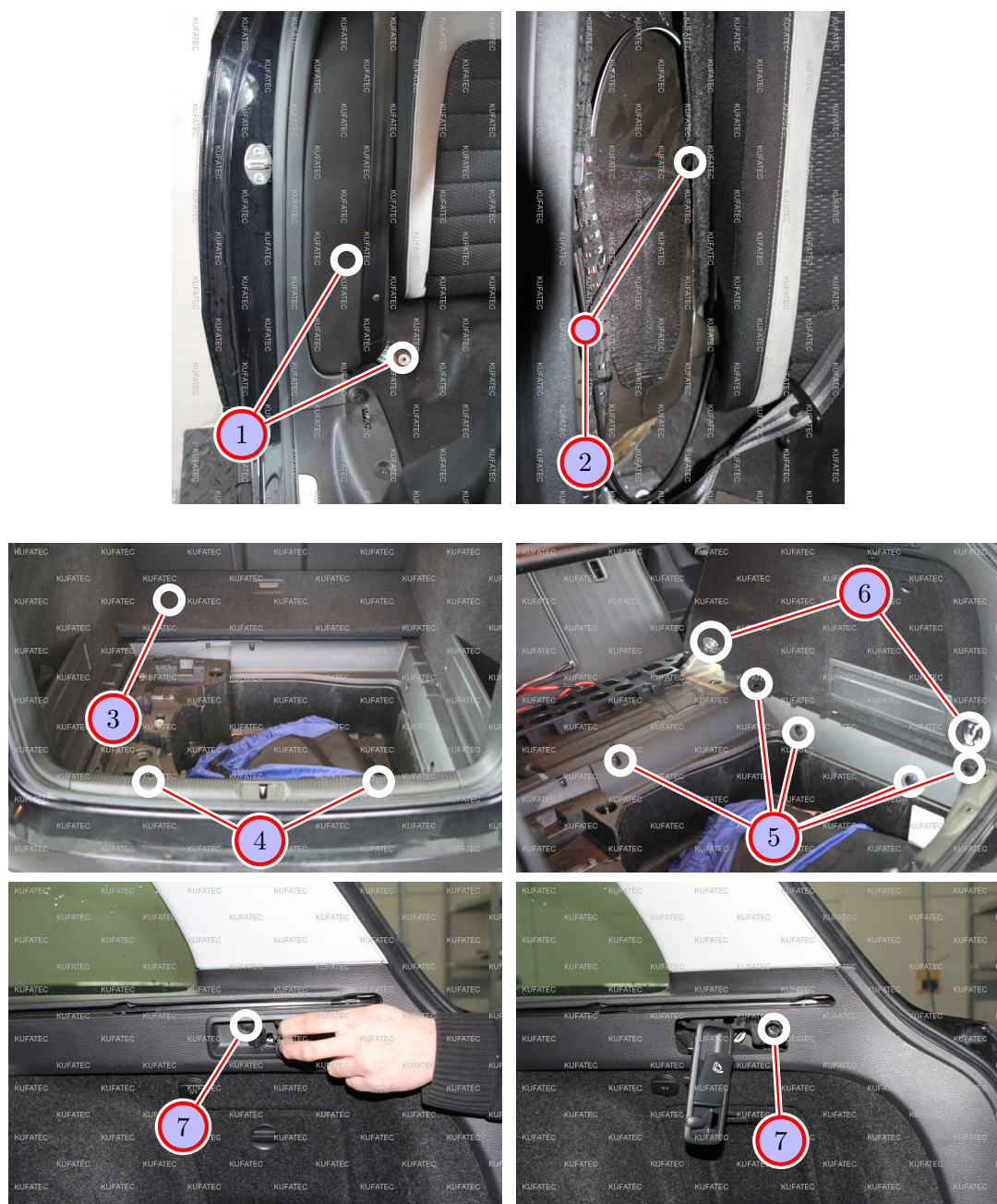


Figure 7: Pictures Laying Cable Set Sound Booster

Table 5: Instructions for Laying Cable Set Sound Booster

Nr.	Procedure	Note
1	Remove the indicated screw and afterwards the side bolster.	10 Nut
2	Pull out the cable for the Sound Booster from the carpet and lead it over the wheel case and behind the covering into the luggage space.	
3	Remove the covering of the luggage space out of the car completely.	
4	Release the screws of the rave rail protection and afterwards remove it.	T20
5	Remove the marked screws and remove the covering.	T20, 10 Nut, 13 Nut
6	Release the screws of the tie-down loops and remove them afterwards.	T30
7	Pull the unlock device of the seats and remove the clip. Now pull the unlock device carefully to you and release the screw behind.	T15



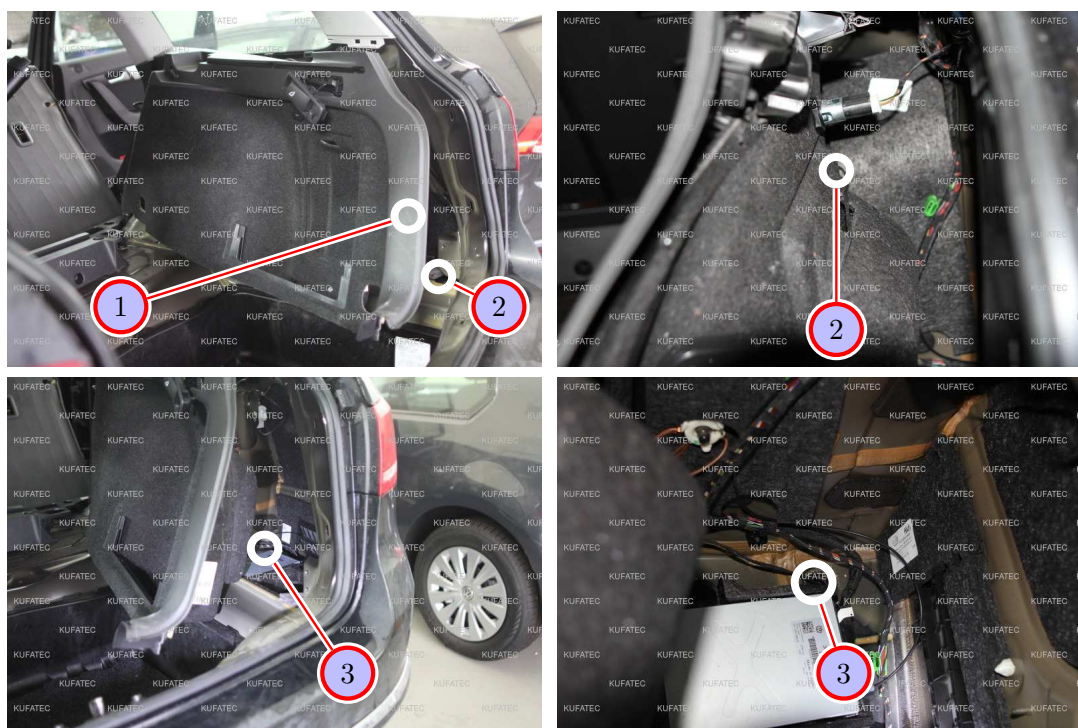


Figure 8: Pictures Laying Cable Set Sound Booster

Table 6: Instructions for Laying Cable Set Sound Booster

Nr.	Procedure	Note
1	Pull the lateral covering carefully.	
2	Afterwards pull the cable for the Sound Booster over the wheel case and along behind the covering.	
3	Drill a hole through the indicated car protective sleeve and lead through the cable for the Sound Booster. Afterwards stuff the protective sleeve with corresponding material.	

## 14 Installation Sound Booster

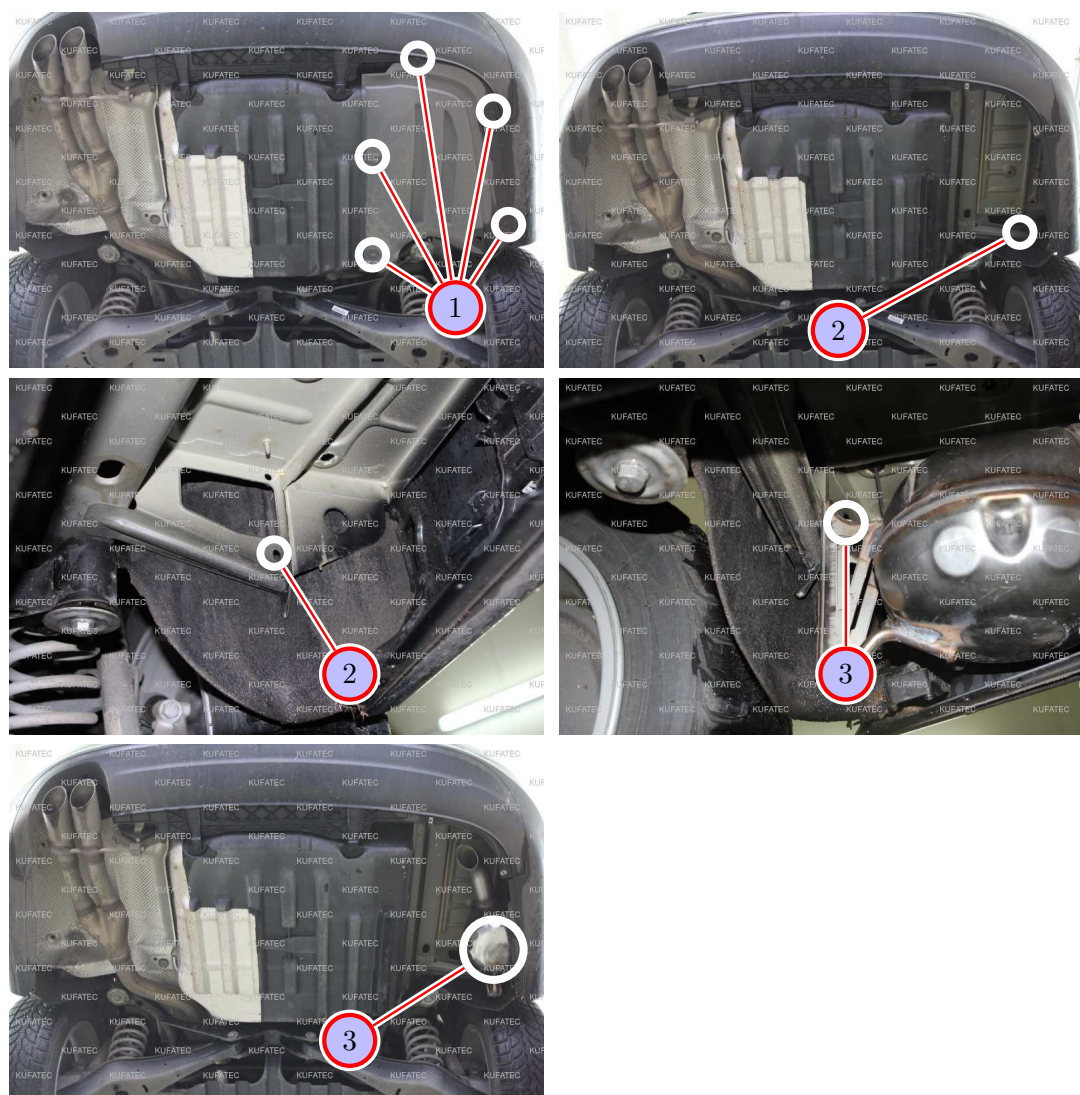


Figure 9: Pictures Installation Sound Booster

Table 7: Instructions for the Installation Sound Booster

Nr.	Procedure	Note
1	Release the indicated screws and afterwards remove the covering.	T20
2	At the indicated position you will find the point where the Sound Booster will be installed.	
3	Now connect the cable to the Sound Booster and install this with a suitable screw and screw nut (these are not part of the scope of supply).	

## 15 Important Information Sound Booster

Please use for the fixation of the Sound Booster suitable high tensile screws. In order to avoid loosening of the screws by vibration please make the screws safe with appropriate factory material e.g. Threadlock. Please additionally check the stability of the Sound Booster regularly and if necessary retighten the screws. In case of no consideration we do not assume liability for possible damages. After successful installation we recommend to cover the sound generator with a zinc spray. Make sure that you cover the opening of the sound generator so that no zinc spray can't get inside the sound generator.

As additional safety the delivered steel cable and the retaining clips have to be tightened on the Sound Booster as well as at a suitable position in the car. This safety cable is an additional security should the tightening screws should be released by vibration.

## List of Figures

1	How to connect a cable to another . . . . .	6
2	Cable Inscription . . . . .	7
3	Car Overview . . . . .	8
4	Pictures Connection Ignition Plus . . . . .	9
5	Pictures Connection Cable Set . . . . .	10
6	Pictures Placing the Sensing Device / Laying Cable Set Sound Booster . . . . .	11
7	Pictures Laying Cable Set Sound Booster . . . . .	12
8	Pictures Laying Cable Set Sound Booster . . . . .	13
9	Pictures Installation Sound Booster . . . . .	14

## List of Tables

1	How to connect a cable to another . . . . .	6
2	Instructions for the Connection of Ignition Plus . . . . .	9
3	Instructions for the Connection of the Cable Set . . . . .	10
4	Instructions for Placing the Sensing Device / Laying the Cable Set Sound Booster . . . . .	11
5	Instructions for Laying Cable Set Sound Booster . . . . .	12
6	Instructions for Laying Cable Set Sound Booster . . . . .	13
7	Instructions for the Installation Sound Booster . . . . .	14